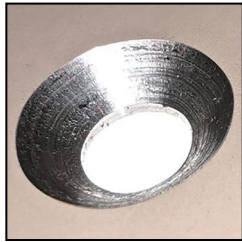




- ◆ M2 HSS
- ◆ Milled Body
- ◆ Ground Flute
- ◆ Sold Individually



- ◆ 1/4" Hex Impact Shank
- ◆ M2 HSS
- ◆ Window & Door Installs
- ◆ Chatterless
- ◆ Sold Individually



Single (1) Flute Countersinks - M2 HSS

60° Part #	82° Part #	90° Part #	100° Part #	Size	Shank Diameter	Shank Length	OAL	List
CI-60-1264	CI-82-1264	CI-90-1264	CI-100-1264	3/16"	3/16"	3/4"	1-1/2"	\$11.50
CI-60-1664	CI-82-1664	CI-90-1664	CI-100-1664	1/4"	1/4"	3/4"	2"	\$11.74
CI-60-2064	CI-82-2064	CI-90-2064	CI-100-2064	5/16"	1/4"	1"	2"	\$13.74
CI-60-2464	CI-82-2464	CI-90-2464	CI-100-2464	3/8"	1/4"	1"	2"	\$16.29
CI-60-3264	CI-82-3264	CI-90-3264	CI-100-3264	1/2"	1/4"	1"	2"	\$20.28
CI-60-4064	CI-82-4064	CI-90-4064	CI-100-4064	5/8"	3/8"	1-1/8"	2-3/4"	\$31.15
CI-60-4864	CI-82-4864	CI-90-4864	CI-100-4864	3/4"	3/8"	1-5/16"	2-3/4"	\$34.90
CI-60-5064	CI-82-5064	CI-90-5064	CI-100-5064	7/8"	1/2"	1-5/16"	2-3/4"	\$55.50
CI-60-6464	CI-82-6464	CI-90-6464	CI-100-6464	1"	1/2"	1-5/16"	2-3/4"	\$61.65

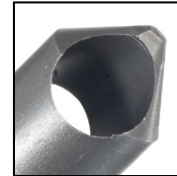


Three (3) Flute Countersinks - M2 HSS

60° Part #	82° Part #	90° Part #	100° Part #	Size	Shank Diameter	Shank Length	OAL	List
R3-60-1664	R3-82-1664	R3-90-1664	R3-100-1664	1/4"	3/16"	3/4"	1-1/2"	\$11.74
R3-60-2464	R3-82-2464	R3-90-2464	R3-100-2464	3/8"	1/4"	7/8"	2-3/4"	\$16.29
R3-60-3264	R3-82-3264	R3-90-3264	R3-100-3264	1/2"	3/8"	1"	2"	\$20.28
R3-60-4064	R3-82-4064	R3-90-4064	R3-100-4064	5/8"	3/8"	1"	2-1/4"	\$31.15
R3-60-4864	R3-82-4864	R3-90-4864	R3-100-4864	3/4"	1/2"	1-1/4"	2-5/8"	\$34.90
R3-60-6464	R3-82-6464	R3-90-6464	R3-100-6464	1"	1/2"	1-1/4"	2-3/4"	\$61.65



IMPACT
1/4" HEX IMPACT SHANK



Zero Flute Countersinks - M2 HSS - 82°

Part #	Degree	Screw Size	Body Dia.	Shank	OAL	List
ZF-1	82°	No. 2, 3, 4	1/4"	1/4" HEX	1-27/32"	\$15.83
ZF-2	82°	No. 5, 6, 8	11/32"	1/4" HEX	2"	\$21.53
ZF-3	82°	No. 10, 12, 14	9/16"	1/4" HEX	2-5/16"	\$31.65



- ◆ 1/4" Hex Impact Shank
- ◆ Inner Reamer
- ◆ Retail Packaging



IMPACT
1/4" HEX IMPACT SHANK



Internal Pipe Reaming

Rim Champ - M2 HSS - 90°

Part #	Description	Size	Qty.	List
RIM-01	Inner Reamer (HSS)	1/8" - 3/4"	1	\$29.33
RIM-02	Inner Reamer (HSS)	3/16" - 7/8"	1	\$41.74