

Half Flat Shank



### Concrete Bits - FOR CONCRETE SCREWS

Part #	Size	x	OAL	Screw	Qty.	List
602TC0503	5/32"	X	3-1/2"	3/16"	50	\$3.17
602TC0500	5/32"	X	4-1/2"	3/16"	50	\$3.31
602TC0505	5/32"	X	5-1/2"	3/16"	50	\$3.60
602TC0603	3/16"	X	3-1/2"	1/4"	50	\$3.60
602TC0604	3/16"	X	4-1/2"	1/4"	50	\$3.73
602TC0605	3/16"	X	5-1/2"	1/4"	50	\$4.01
602TC0606	3/16"	X	6-3/4"	1/4"	50	\$4.72
602TC0607	3/16"	X	7-5/8"	1/4"	50	\$5.67



- ◆ Industrial Quality
- ◆ Tungsten Carbide Tip
- ◆ ANSI Specification
- ◆ Sold Individually



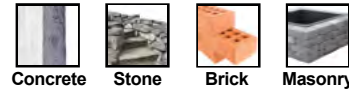
Each concrete screw carbide drill bit is precisely ground to match a certain tolerance to assure proper hole diameter and to achieve maximum thread holding power. The flat on the shank fits all drill adapters. The drill bit is specially heat treated to make it very durable.

5/16" HEX SHOULDER



### SDS-HEX Bits - FOR CONCRETE SCREWS

Part #	Size	x	OAL	Drilling	Screw	Qty.	List
HEX5325	5/32"	X	5"	2-1/2"	3/16"	1	\$10.92
HEX5327	5/32"	X	7"	4-1/2"	3/16"	1	\$12.17
HEX3165	3/16"	X	5"	2-1/2"	1/4"	1	\$10.92
HEX3167	3/16"	X	7"	4-1/2"	1/4"	1	\$12.17
HEX2345	.234"	X	5"	2-1/2"	Crete-Flex®	1	\$12.56
HEX2347	.234"	X	7"	4-1/2"	Crete-Flex®	1	\$15.40



- ◆ Industrial Quality
- ◆ Special Tungsten Carbide Tip
- ◆ ANSI Specification
- ◆ Copper / Silver Brazing
- ◆ Polished Finish
- ◆ Sold Individually



SDS-HEX Rotary Hammer drill bits are specifically designed to be used in concrete screw installation. These SDS bits have a special 5/16" HEX shoulder for use with standard concrete screw installation sleeves, which eliminate the need for drill adapters. The benefits of using an SDS machine rather than a standard rotation drill means a decrease in operation time of nearly 50%. **SEE BELOW FOR INSTALLATION KIT**



### Concrete Screw Installation Sleeve

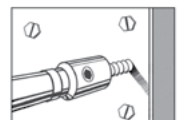
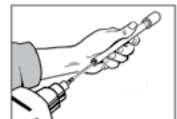
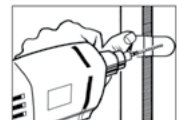
Part #	Description	Qty.	List
TPCDSL	6-1/2" Concrete Screw Sleeve	1	\$23.09



Made In



These Installation Kits are Suitable for both Standard Concrete Bits & SDS-HEX Rotary Hammer Bits.



### Deluxe Installation Kit

Part #	Description	List
602TC1000	Installation Kit	\$88.55

**INCLUDES:**

- 5/32" x 7" SDS-PLUS Hex Bit
- 3/16" x 7" SDS-PLUS Hex Bit
- 1/4" Magnetic Driver
- 5/16" Magnetic Driver
- Phillips Bit Adapter
- Masonry Drill Adapter
- 6-1/2" Sleeve
- 1/8" Hex Key
- Phillips #2 x 1" Insert
- Phillips #3 x 1" Insert

### Basic Installation Kit

Part #	Description	List
602TC2000	Installation Kit	\$76.25

**INCLUDES:**

- 1/4" Magnetic Driver
- 5/16" Magnetic Driver
- Phillips Bit Adapter
- Masonry Drill Adapter
- 6-1/2" Sleeve
- 1/8" Hex Key
- Phillips #2 x 1" Insert
- Phillips #3 x 1" Insert