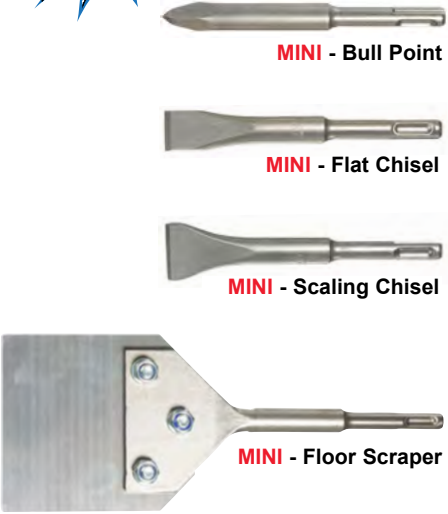




**MINI CHISELS
 FOR THOSE
 TIGHT SPOTS**

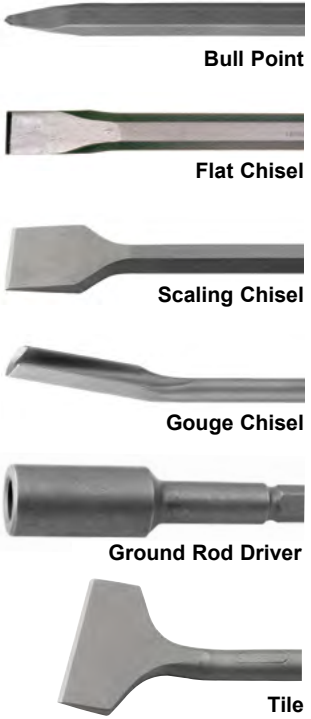


SDS-PLUS Chisels - MINI

Part #	Size	Description	List
2100BP	5-1/2"	MINI - Bull Point	\$21.00
2110FC	3/4" x 5-1/2"	MINI - Flat Chisel	\$23.30
2115SC	1-1/4" x 5-1/2"	MINI - Scaling Chisel	\$29.20
2244FS	4" x 10"	MINI - Floor Scraper	\$119.65
FS-4B		MINI - Replacement Blade (Floor Scraper)	\$22.92
FS-4NUT		MINI - Replacement Nuts & Bolts (Floor Scraper)	\$22.88

SDS-PLUS Chisels

Part #	Size	Description	List
3100BP	10"	Bull Point	\$23.07
3110FC	3/4" x 10"	Flat Chisel	\$23.07
3115SC	1-1/2" x 10"	Scaling Chisel	\$42.88
3120GC	7/8" x 10"	Gouge Chisel	\$41.10
3150GR	5/8" x 10"	Ground Rod Driver	\$70.46
3175TC	3" x 6-1/2"	Tile Chisel	\$43.53



SOLD INDIVIDUALLY
 1 PER CLIP.



SDS-MAX® Chisels

Part #	Size	Description	List
7000BP	12"	Bull Point	\$22.48
7005BP	18"	Bull Point	\$28.02
7024BP	24"	Bull Point	\$52.00
7010FC	1" x 12"	Flat Chisel	\$22.48
7015FC	1" x 18"	Flat Chisel	\$28.02
7024FC	1" x 24"	Flat Chisel	\$52.00
7020SC	1-1/2" x 12"	Scaling Chisel	\$34.89
7025SC	2" x 12"	Scaling Chisel	\$36.47
7028SC	2" x 18"	Scaling Chisel	\$47.78
7029SC	2" x 24"	Scaling Chisel	\$54.00
7030SC	3" x 12"	Scaling Chisel	\$45.69
7035AC	2" x 12"	Angled Chisel	\$58.64
7045BT	1-7/8" x 9-7/8"	Bushing Tool	\$144.86
7050GR	7/8" x 10-1/4"	Ground Rod Driver	\$131.48
7055PH	3-1/2" x 16"	Asphalt Cutter	\$175.99
7060SM	1-1/8" x 12"	Seam Tool	\$48.92
7065CS	5-3/8" x 16"	Clay Spade	\$180.04
7075GC	1" x 12"	Gouge Chisel	\$74.82
520MAX	12"	SDS-Max Tamping Shank	\$62.05
520STP	5" SQUARE	Tamping Plate	\$130.31
7070FS	6" x 25"	Floor Scraper	\$509.91
FS-6B		Replacement Blade (Floor Scraper)	\$23.31
FS-6NUT		Replacement Nuts & Bolts (Floor Scraper)	\$39.89



Bull Point



Flat Chisel



Scaling Chisel



Angled Chisel



Bushing Tool



Ground Rod Driver



Asphalt Cutter



Seam Tool



Clay Spade



Gouge Chisel



Tamping



Floor Scraper



SOLD INDIVIDUALLY
1 PER CLIP.